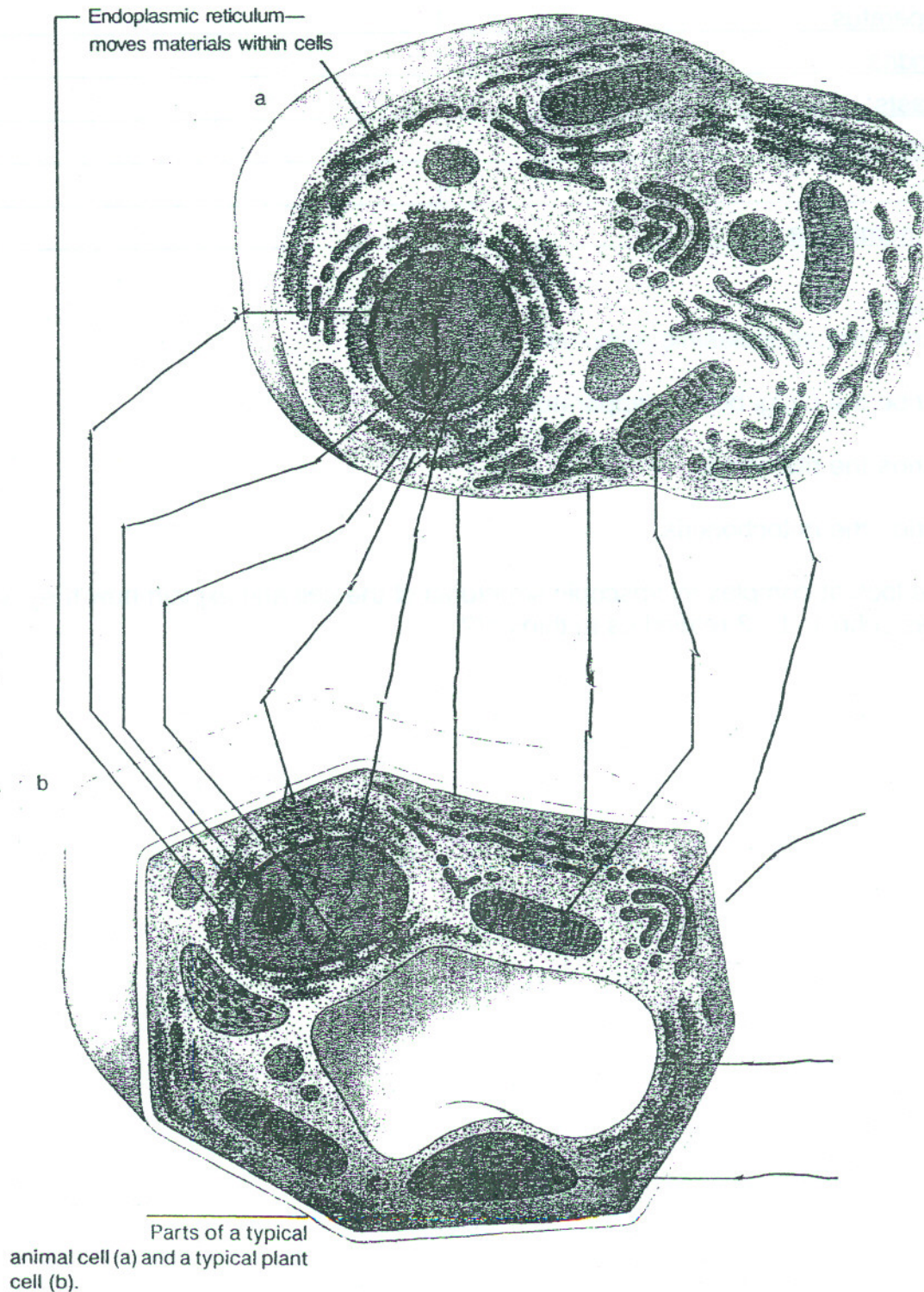


Experiment: Cell Parts (B. Science 10-7-2d)

Purpose: To review the parts of the cell.

Methods: 1. Label the diagram by placing the name of the cell part on the line of which it is pointing to. Then fill in the chart for the parts listed in results section.

Results:



Sec.: _____ Name: _____

Results:

<u>CELL PART</u>	<u>LOCATION</u>	<u>FUNCTION</u>
cell membrane:		
nucleus:		
cytoplasm:		
cell wall:		
endoplasmic reticulum:		
ribosomes:		
Golgi apparatus:		
mitochondria:		
chloroplasts:		
chromosomes:		
nucleolus:		
nuclear membrane:		

Conclusions:

1. Describe the endoplasmic reticulum.
2. Describe the Golgi bodies (apparatus).
3. Describe the ribosomes.
4. Describe the mitochondria.
5. As we look at complex microscopic structures of the cell and explain how they work, what does John 1: 1 - 3 remind us to think of?